

FACT SHEET

REVISED/SUPPLEMENTAL DRAFT EIR/EIS

SAN FRANCISCO TO SAN JOSE PROJECT SECTION

Available for public review and comment from July 23 to September 8, 2021 at www.hsr.ca.gov

OVERVIEW

The California High-Speed Rail Authority (Authority) is issuing a limited revision to its previously published Draft Environmental Impact Report (EIR)/Environmental Impact Statement (EIS) for the San Francisco to San Jose Project Section of the California High-Speed Rail Project. This newly issued document is entitled *San Francisco to San Jose Project Section: Revised Draft EIR/Supplemental Draft EIS*.

This Revised/Supplemental Draft EIR/EIS (“recirculated document”) is being prepared by the Authority, which is the California Environmental Quality Act (CEQA) and National Environmental Policy Act¹ (NEPA) lead agency pursuant to 23 U.S.C. 327.

RECIRCULATED MATERIALS

The recirculated document includes:

- **Section 3.20:** Analysis of the environmental impacts¹ of the new Millbrae-SFO Station Reduced Site Plan (RSP) Design Variant which has been developed in response to stakeholder concerns about the design of Millbrae-SFO Station evaluated in the Draft EIR/EIS.
- **Section 3.7:** Additional impact analysis and revised and added mitigation measures in response to the monarch butterfly being determined to be a candidate for listing by the U.S. Fish and Wildlife Service under the federal Endangered Species Act.

¹National Environmental Policy Act: A Federal law that requires Federal agencies to assess the environmental effects of their proposed actions prior to making decisions. The environmental review, consultation, and other actions required by applicable federal environmental laws for this project are being or have been carried out by the State of California pursuant to 23 U.S.C. 327 and a Memorandum of Understanding dated July 23, 2019 and executed by the Federal Railroad Administration and the State of California.



The Millbrae-SFO Station will provide connections from high-speed rail to BART, Caltrain, SamTrans, and other transit providers.

The recirculated document will be available for public review from July 23, 2021 to September 8, 2021.

Responses to comments will be included in the Final EIR/EIS.

Submit comments via:

@ Email:
san.francisco_san.jose@hsr.ca.gov;
Subject line: “Revised/Supplemental Draft EIR/EIS Comment”

✉ Mail addressed to:
Attn: San Francisco to San Jose Project Section: Revised/Supplemental Draft EIR/EIS Comment,
Northern California Regional Office
California High-Speed Rail Authority
100 Paseo De San Antonio, Ste. 300
San Jose, CA 95113

🖥 Web form:
www.hsr.ca.gov

💬 Verbal comments:
(800) 435-8670



Millbrae-SFO Station Reduced Site Plan Design Variant

The RSP Design Variant differs from the design of the Millbrae Station Design, that was evaluated in the Draft EIR/EIS, by:

- Eliminating surface parking lots on the west side of the alignment that would have served as replacement parking for displaced Caltrain and Bay Area Rapid Transit parking spaces;
- Relocating the high-speed rail station entrance hall;
- Eliminating lane modifications to El Camino Real; and
- Eliminating the California Drive extension north of Linden Avenue to El Camino Real from the project.

The RSP Design Variant can be incorporated into either project Alternative - Alternative A or Alternative B.

Because the RSP Design Variant is a potentially feasible alternative different from the Millbrae Station Design, the Authority determined that the analysis of the RSP Design Variant should be included in the recirculated environmental document.

The Board's selection of the station design would take place when the Final EIR/EIS is published, and the Record of Decision (ROD) is up for consideration in 2022.

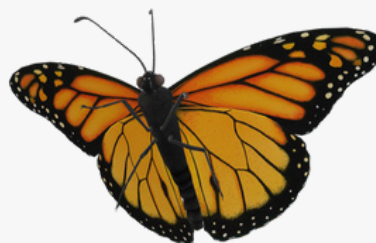


The blue represents location of Station Entrance Hall with overhead pedestrian crossing to connect high-speed rail to Caltrain and BART in the Millbrae Station Design (above) and the RSP Design Variant (below)

New Special-Status Species

The monarch butterfly became a candidate for listing under the federal Endangered Species Act in December 2020. The butterfly is assumed to be present in the San Francisco to San Jose resource study area, based on historical records and the existence of suitable habitat.

Accordingly, the Authority conducted analysis of potential impacts to the monarch butterfly, and included revised and new mitigation measures.



The monarch butterfly has been added as a candidate for protections under the federal Endangered Species Act.

The Authority welcomes comments on the content of the Revised/Supplemental Draft EIR/EIS and requests that such comments be limited to the scope of the Revised/Supplemental Draft EIR/EIS.

Learn more and review the recirculated document at www.hsr.ca.gov. Questions about the materials? Call (800) 435-8670